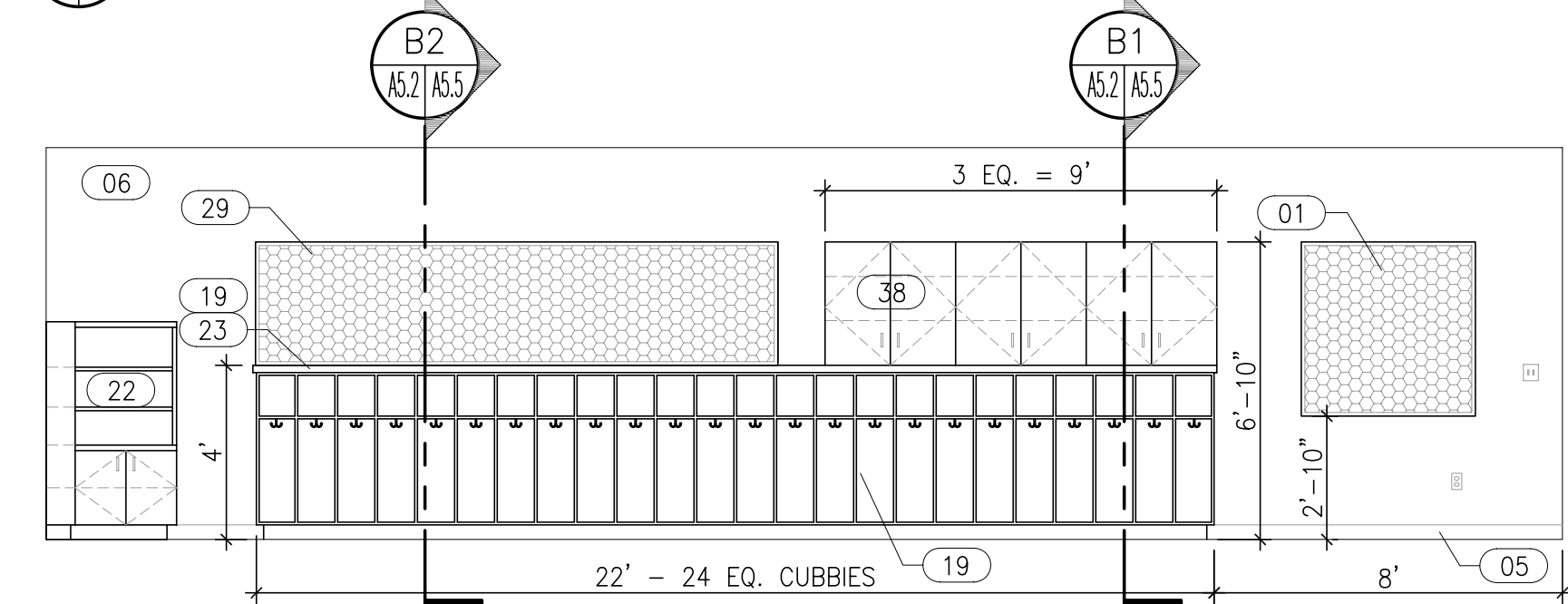
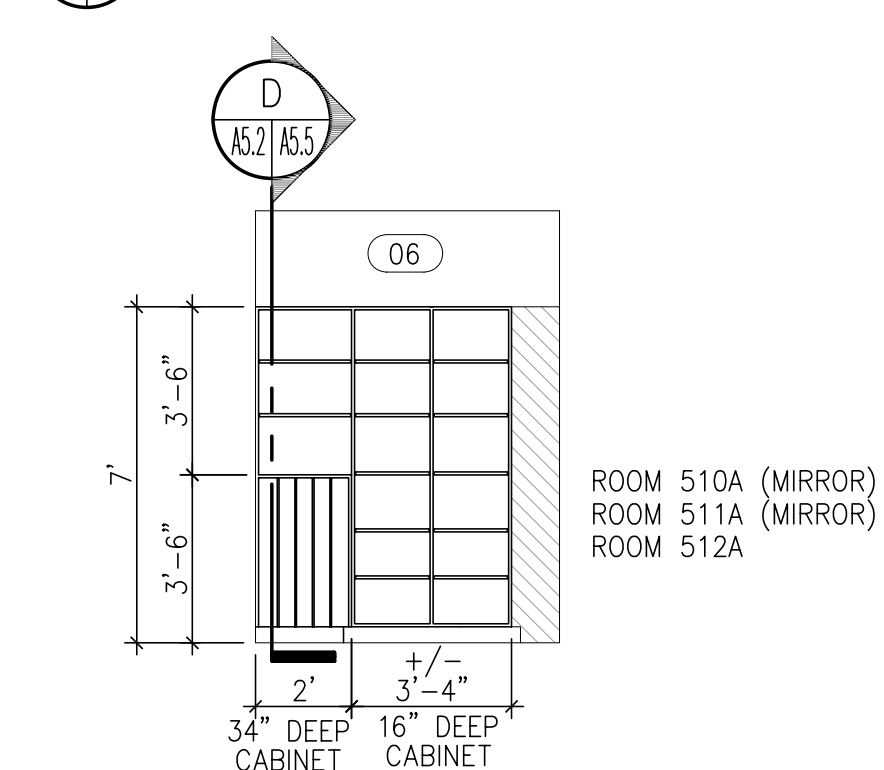


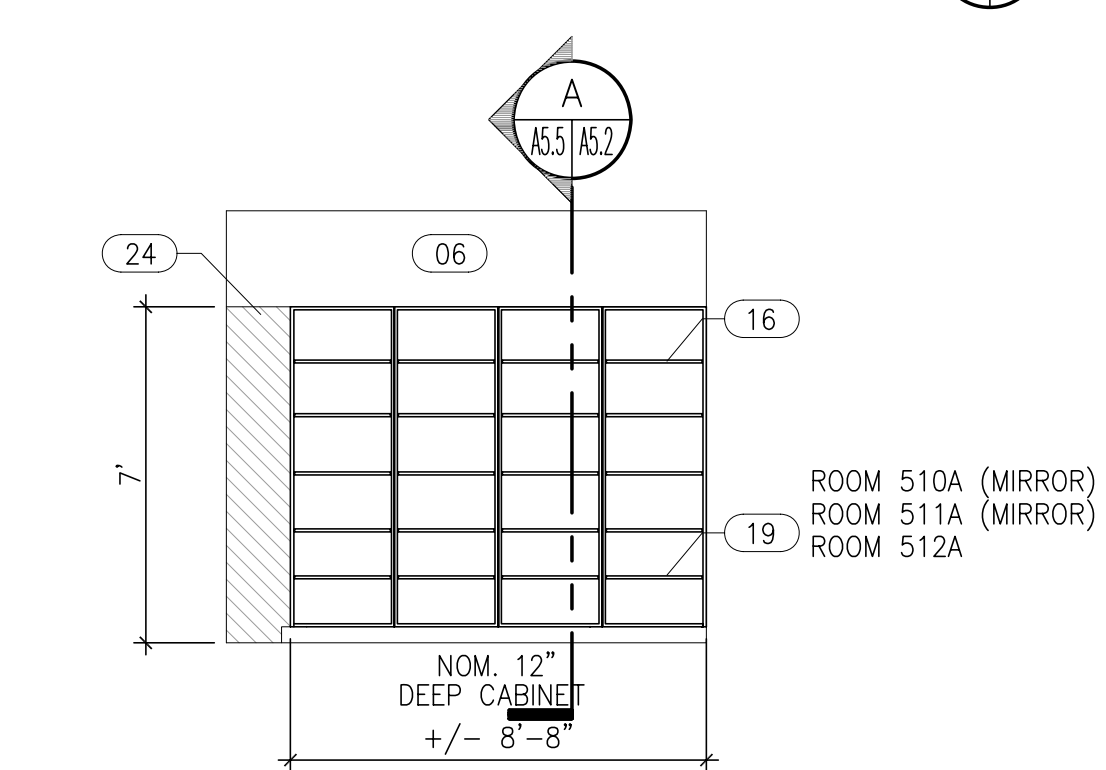
15 INTERIOR ELEVATION-ESE-ROOM #511
SCALE: 1/4"=1'-0"



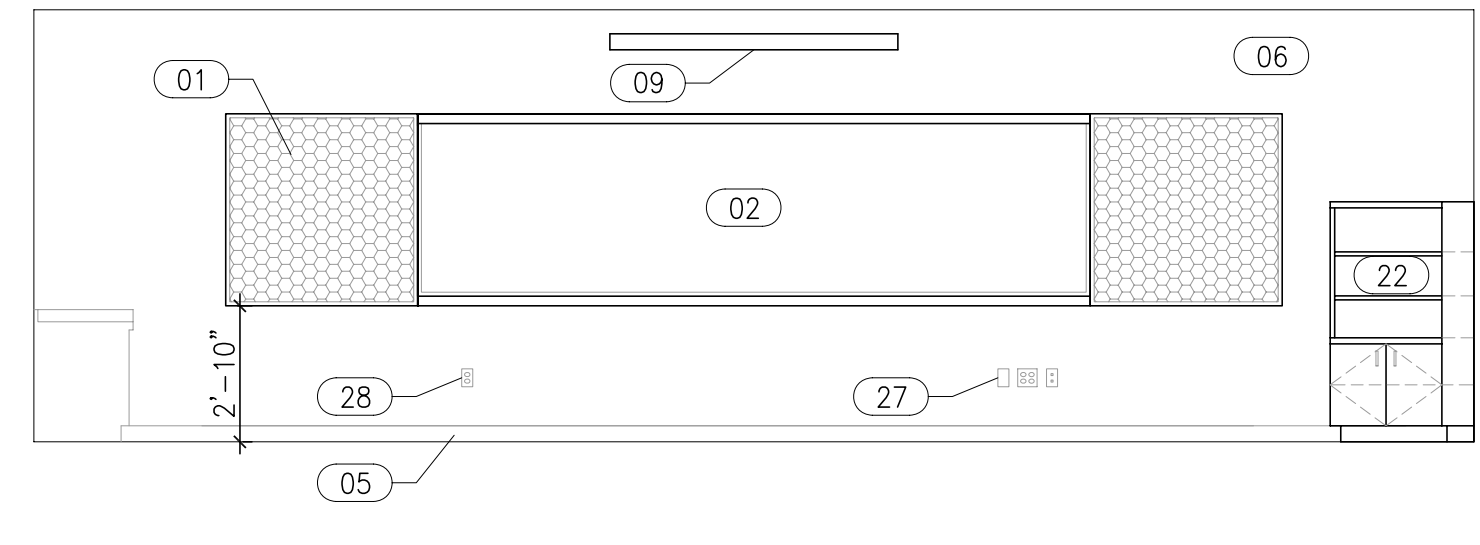
17 INTERIOR ELEVATION-ESE-ROOM #511
SCALE: 1/4"=1'-0"



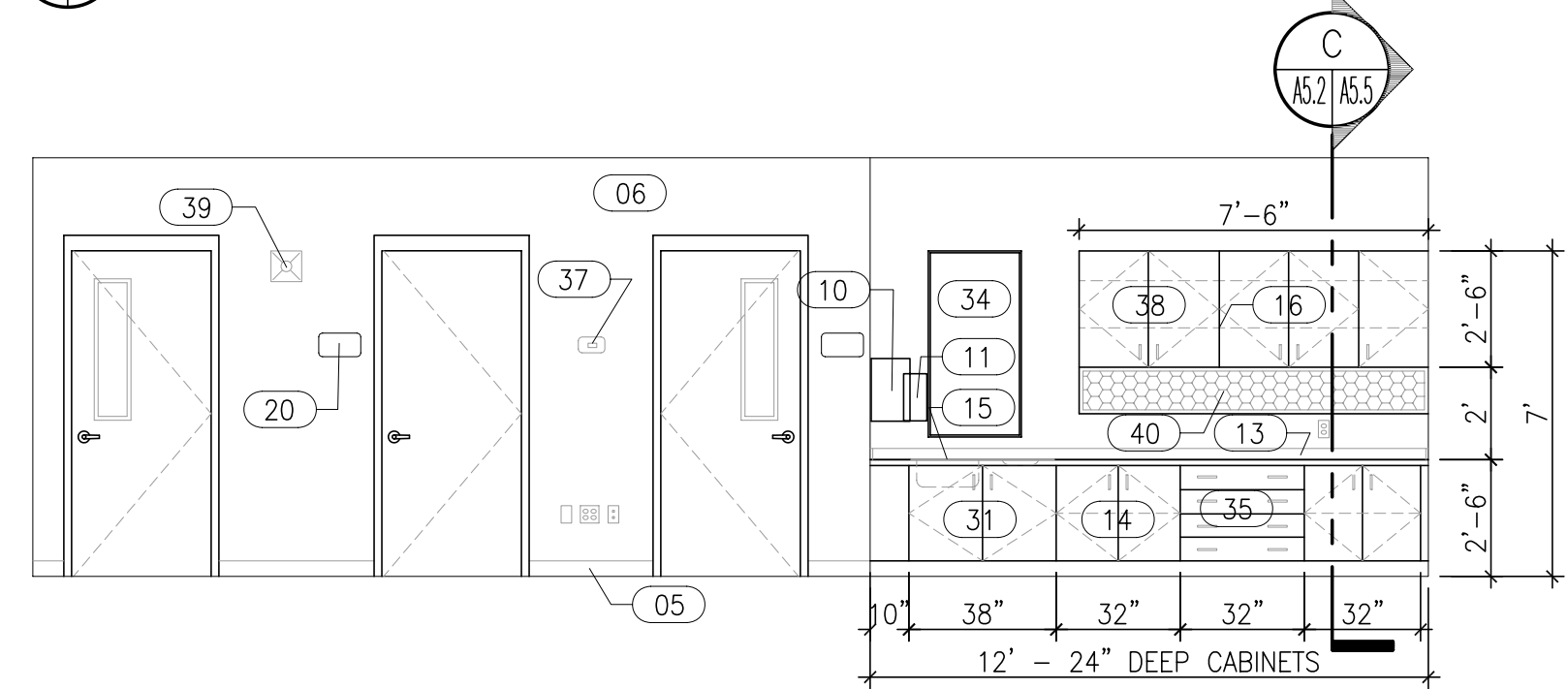
19 INTERIOR ELEVATION-CLOSET
SCALE: 1/4"=1'-0"



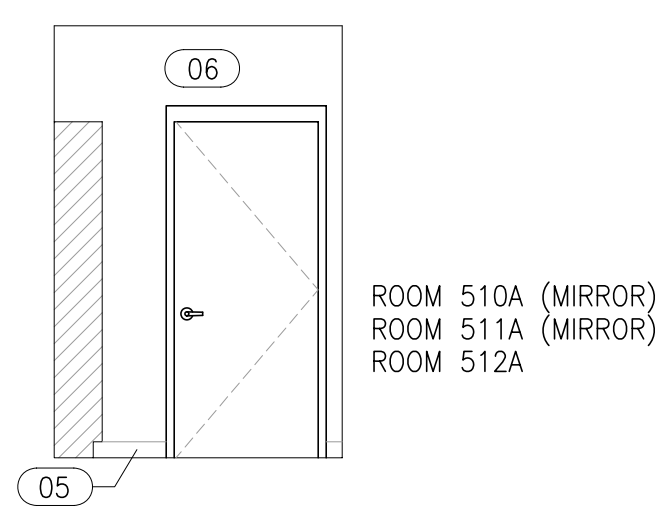
20 INTERIOR ELEVATION-CLOSET
SCALE: 1/4"=1'-0"



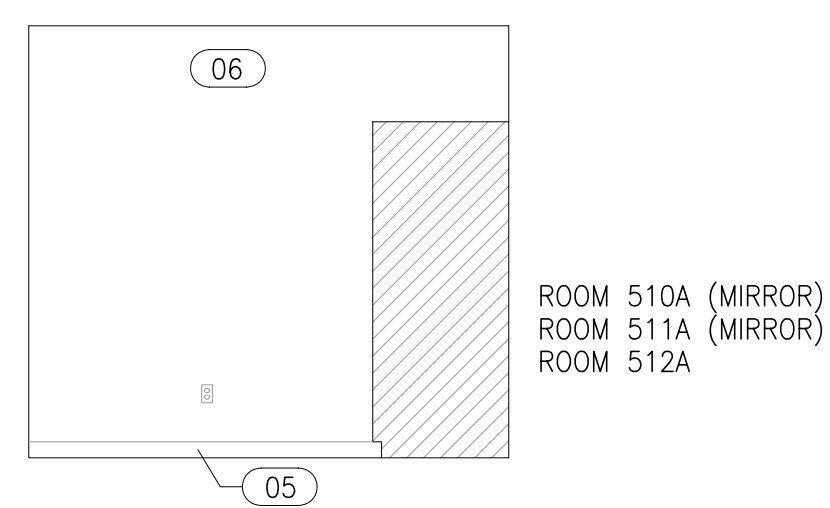
16 INTERIOR ELEVATION-ESE-ROOM #511
SCALE: 1/4"=1'-0"



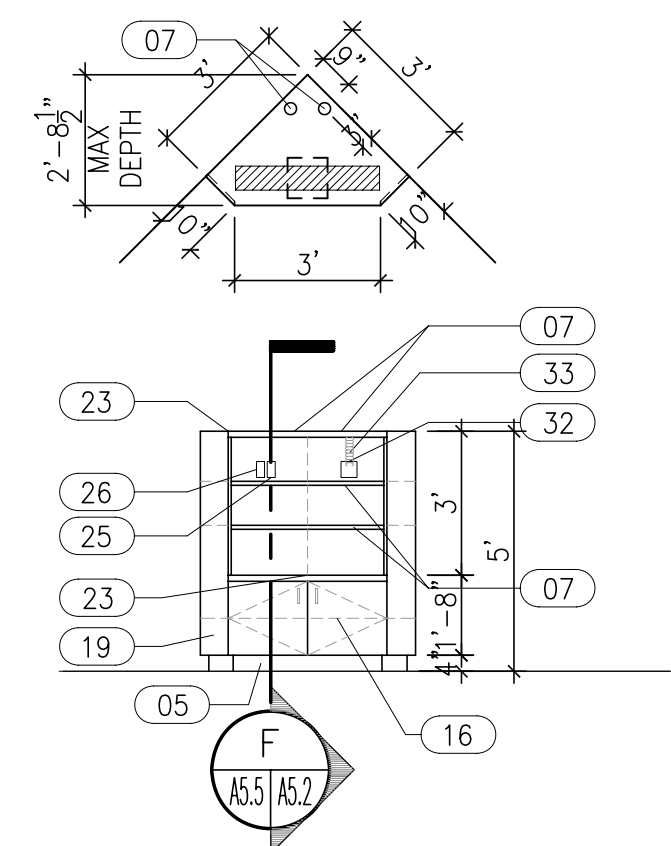
18 INTERIOR ELEVATION-ESE-ROOM #511
SCALE: 1/4"=1'-0"



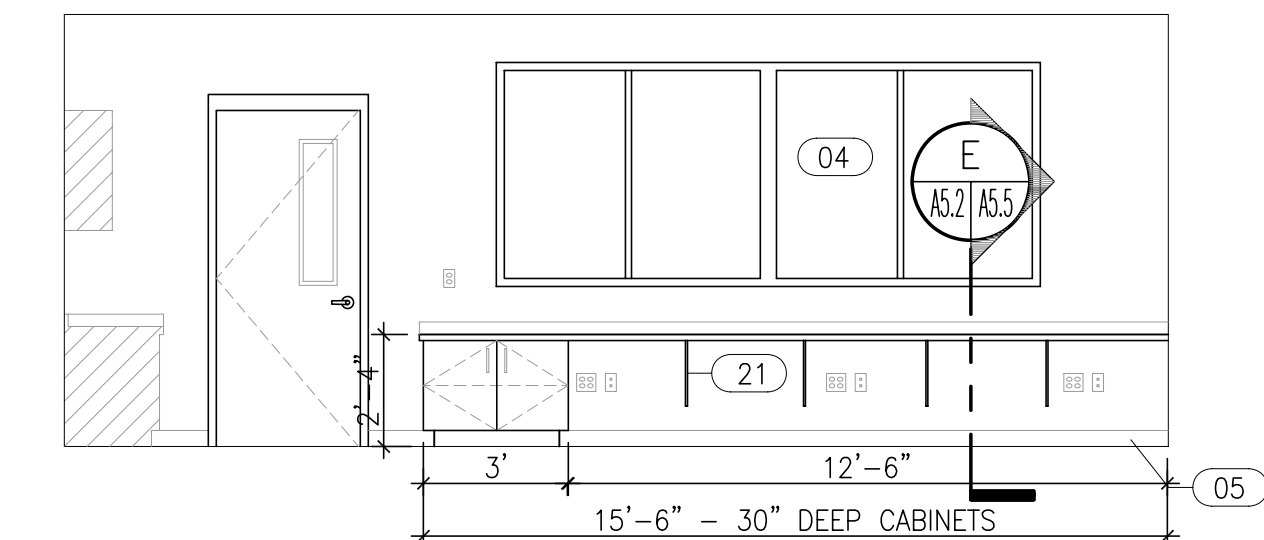
21 INTERIOR ELEVATION-CLOSET
SCALE: 1/4"=1'-0"



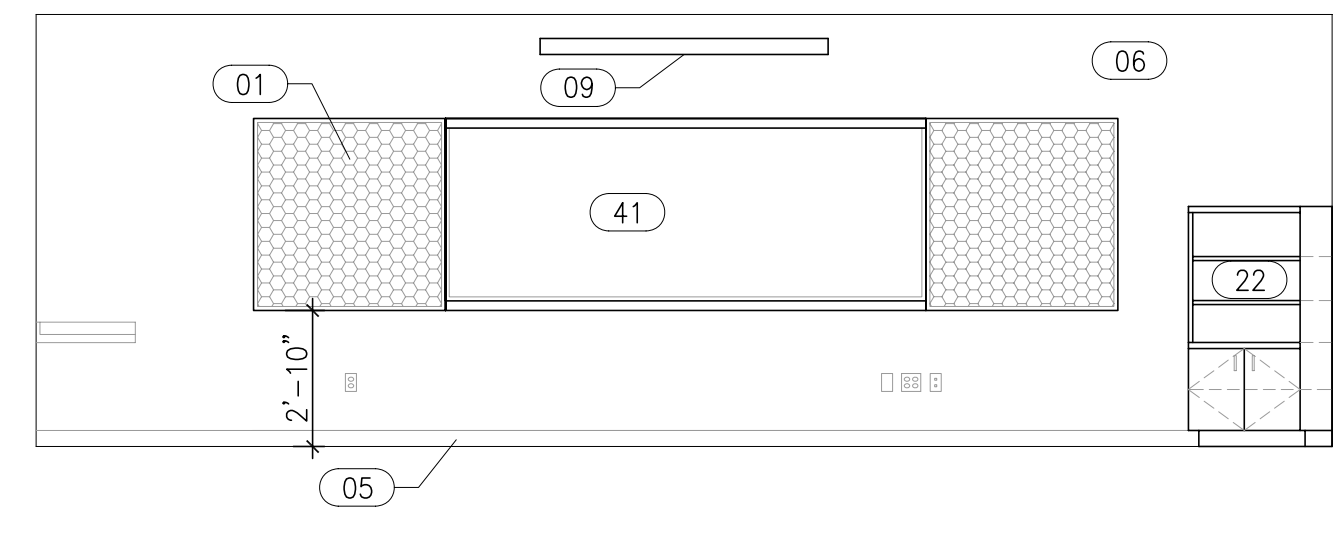
22 INTERIOR ELEVATION-CLOSET
SCALE: 1/4"=1'-0"



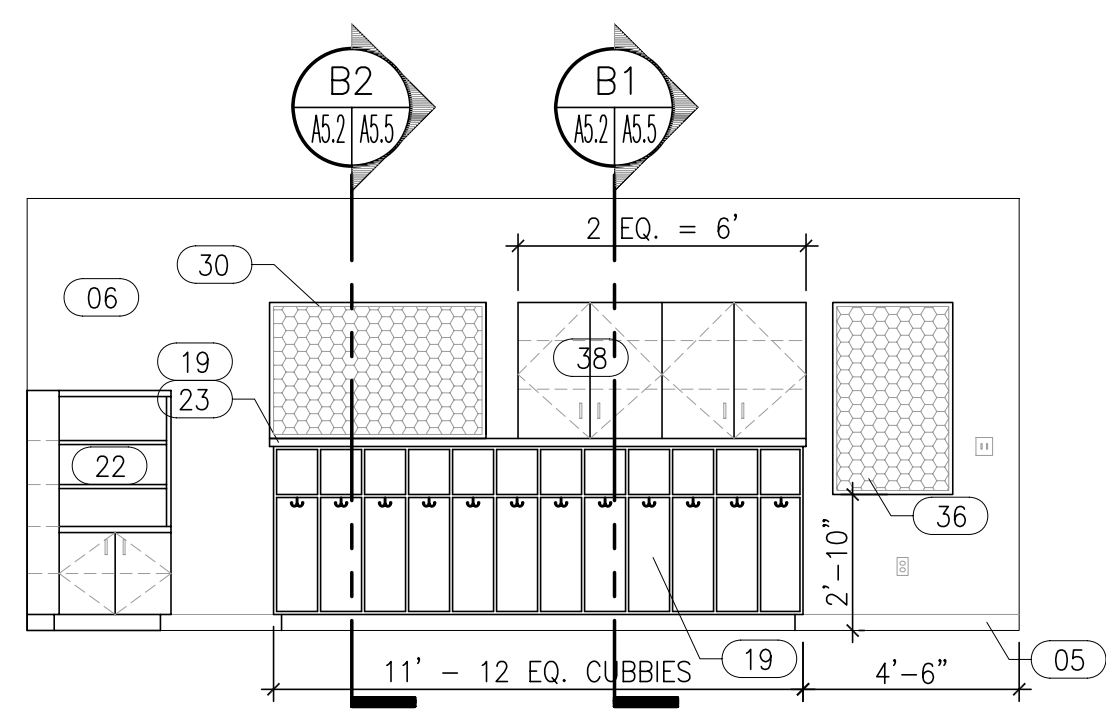
TELEVISION CABINET ELEVATION
SCALE: 1/4"=1'-0"



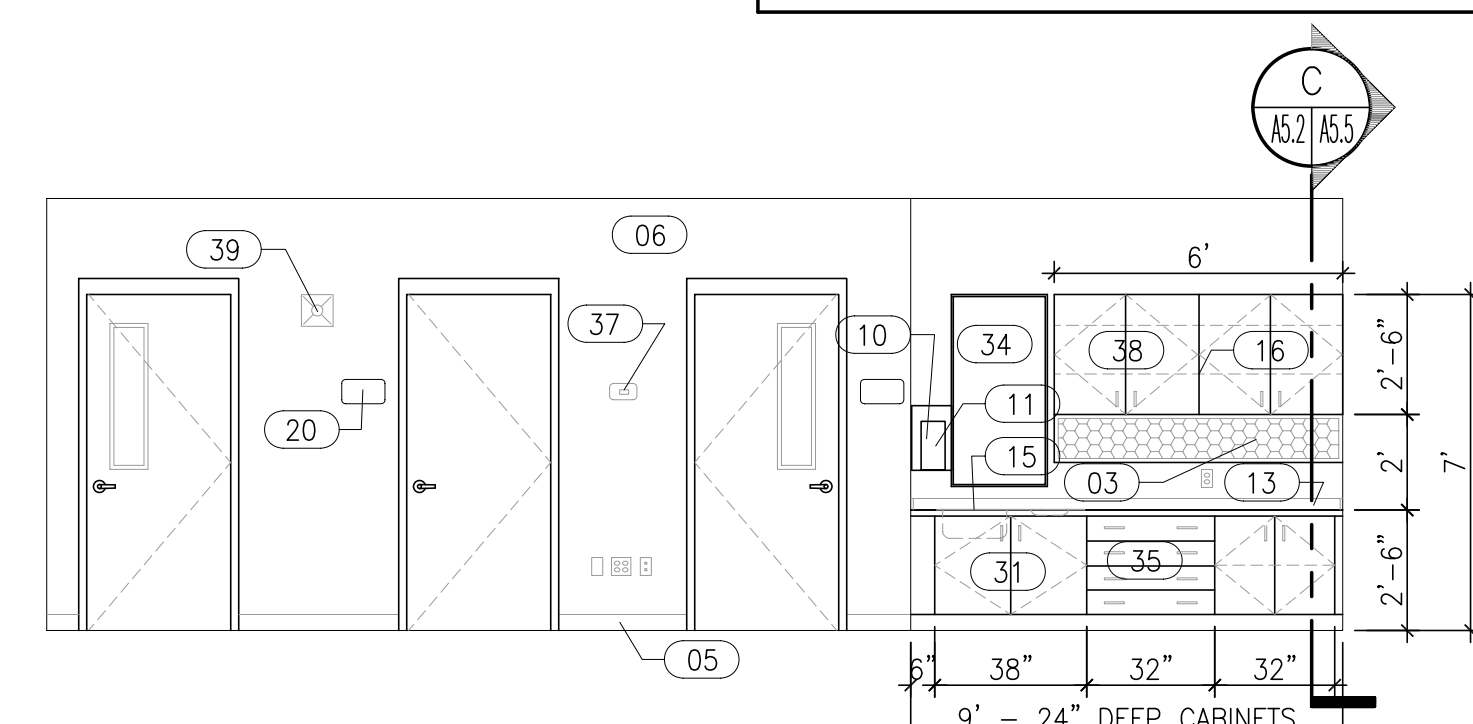
23 INTERIOR ELEVATION-RESOURCE-ROOM #510
SCALE: 1/4"=1'-0"



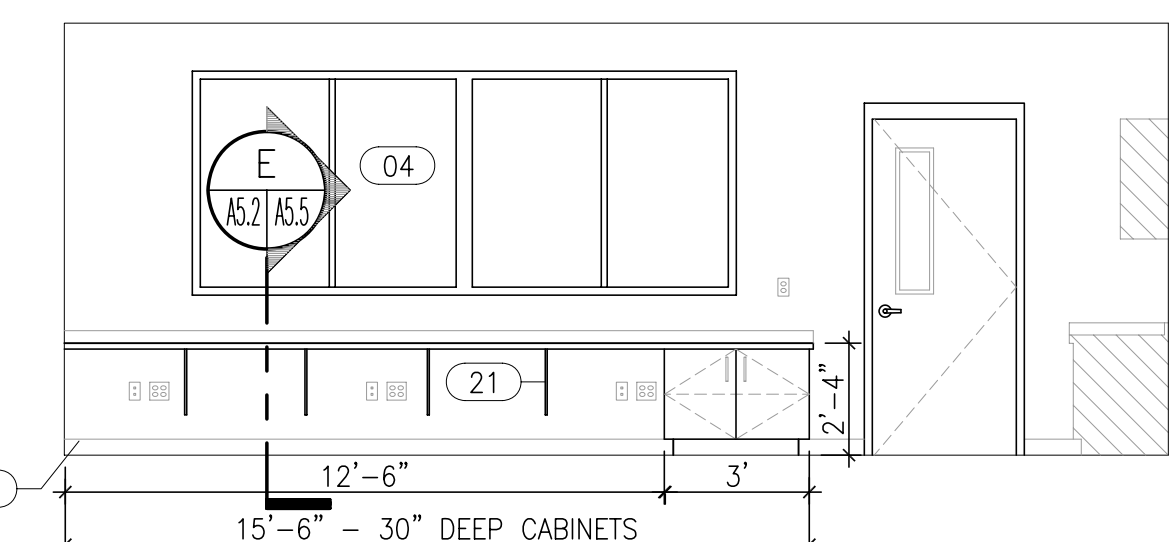
24 INTERIOR ELEVATION-RESOURCE-ROOM #510
SCALE: 1/4"=1'-0"



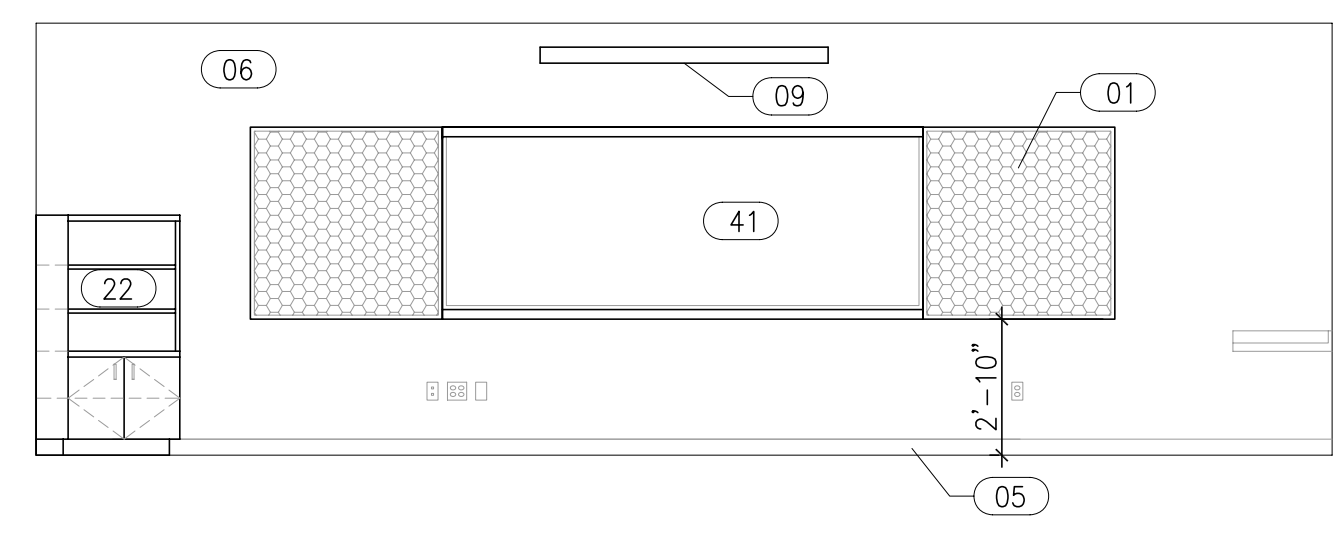
25 INTERIOR ELEVATION-RESOURCE-ROOM #510
SCALE: 1/4"=1'-0"



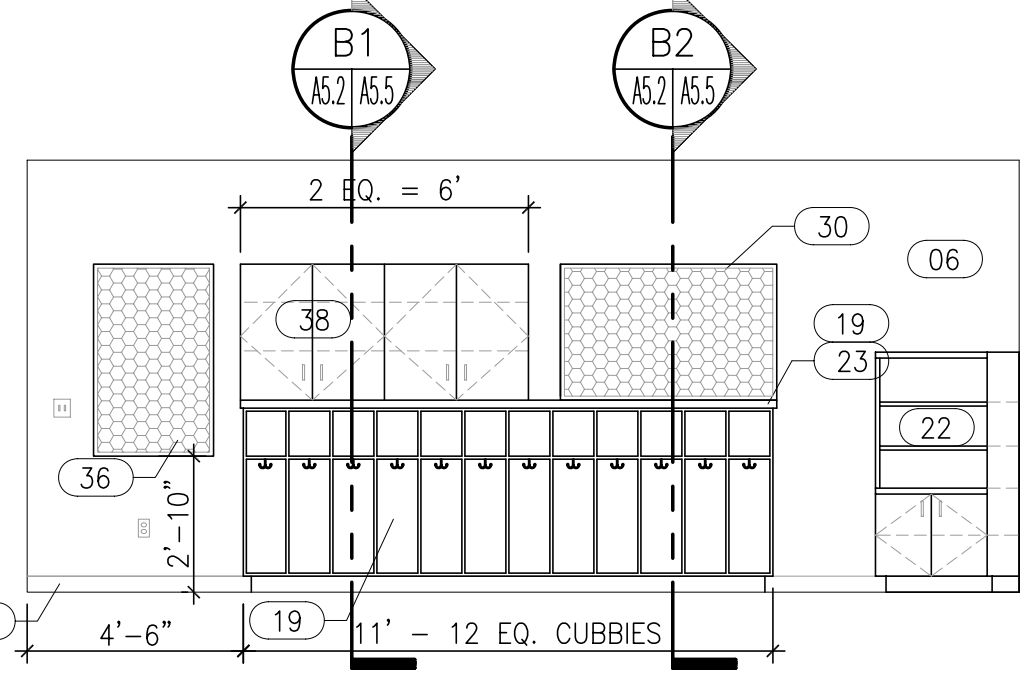
26 INTERIOR ELEVATION-RESOURCE-ROOM #510
SCALE: 1/4"=1'-0"



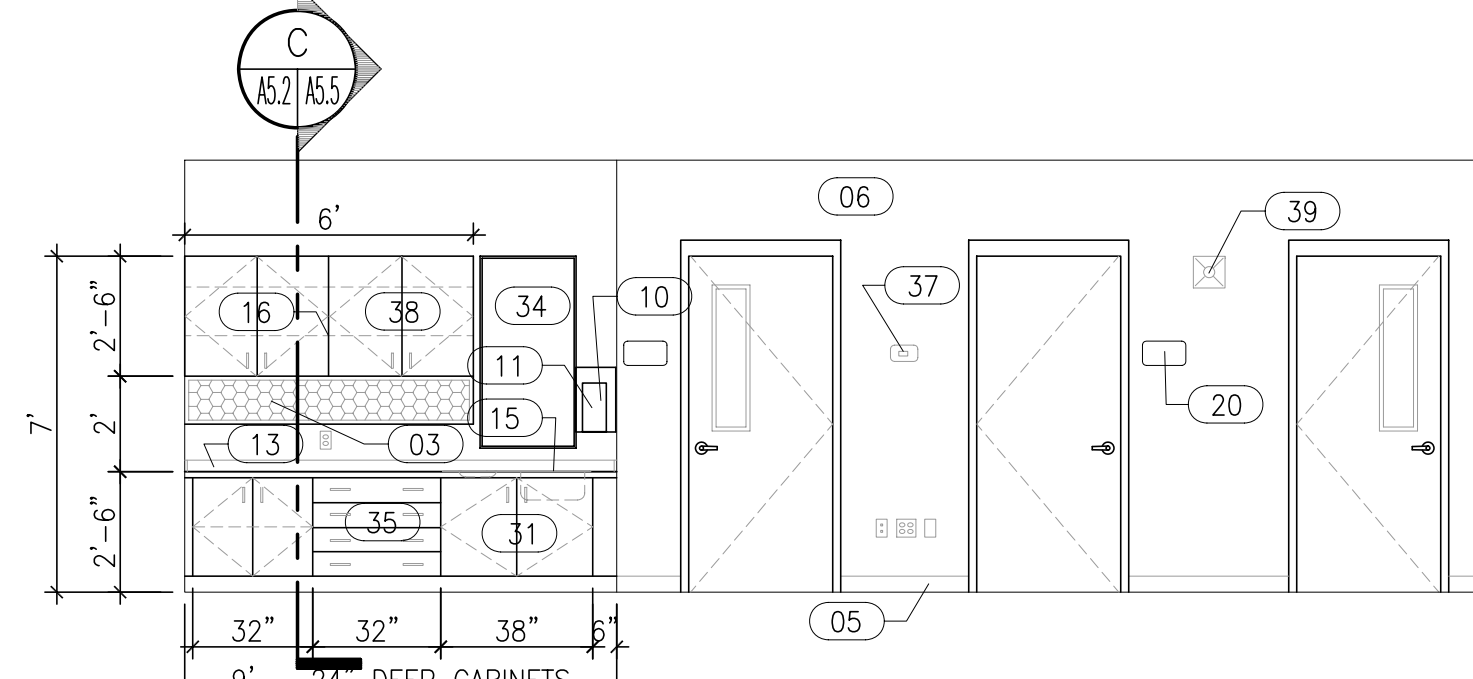
27 INTERIOR ELEVATION-RESOURCE-ROOM #512
SCALE: 1/4"=1'-0"



28 INTERIOR ELEVATION-RESOURCE-ROOM #512
SCALE: 1/4"=1'-0"



29 INTERIOR ELEVATION-RESOURCE-ROOM #512
SCALE: 1/4"=1'-0"



30 INTERIOR ELEVATION-RESOURCE-ROOM #512
SCALE: 1/4"=1'-0"

- SHEET NOTES:**
- SYMBOL DESCRIPTION: (THESE NOTES SPECIFIC TO THIS DRAWING)
- 01 4"Wx4"H TACK BOARD
 - 02 14"Wx4"H MARKERBOARD WITH CONTINUOUS 2" MAP RAIL
 - 03 6"Wx1"H TACK BOARD
 - 04 EXTERIOR WINDOW
 - 05 BASE. REFER TO FINISH SCHEDULE
 - 06 PAINTED CMU. REFER TO FINISH SCHEDULE
 - 07 3" CASEWORK GROMMET THRU COUNTERTOP, TYP. AT ALL COMPUTER WORK STATIONS AND TV CABINET WHETHER INDICATED OR NOT
 - 08 MARBLE SILL, TYP.
 - 09 PROJECTION SCREEN. MOUNT 8'-6" AFF. REFER TO SPECS. COORDINATE EXACT LOCATION WITH PROJECTOR
 - 10 PAPER TOWEL DISPENSER BY OWNER. MOUNT ON SIDE WALL
 - 11 SOAP DISPENSER BY OWNER
 - 12 FULL DEPTH ADJUSTABLE SHELF
 - 13 3" HIGH BACK SPLASH
 - 14 BASE CABINET - PLAS. LAM. TYP.
 - 15 SINK - REQUIRES 36"x16" CUTOUT. CONFIRM WITH PLUMBING
 - 16 ADJUSTABLE SHELVES. SEE SPECIFICATIONS
 - 17 PROVIDE MIN. 25" CLEAR DEPTH OF DRAWER SPACE
 - 18 4 EQUAL POSTER DRAWERS w/ FULL EXTENSION SLIDES
 - 19 PLASTIC LAMINATE TYP. ALL SURFACES
 - 20 ROOM SIGN, TYP.
 - 21 HEAVY DUTY 1000# RATED SUPPORT. POWDER COATED FINISH. SEE SPECIFICATIONS
 - 22 TELEVISION CABINET. REFER TO DETAIL A/A5.2
 - 23 FIXED COUNTER TOP W/ RADIUS OUTSIDE CORNERS. SEE SPECS
 - 24 PROVIDE CLOSER AT CORNERS AND ENDS OF CABINETS, TYP.
 - 25 QUADPLEX, REFER TO ELECTRICAL
 - 26 TV OUTLET. REFER TO TEL/COM.
 - 27 JUNCTION BOX. REFER TO TEL/COM
 - 28 OUTLET. REFER TO ELECTRICAL
 - 29 12"W x 2'-10"H TACK BOARD
 - 30 4'-6"W x 2'-10"H TACK BOARD
 - 31 CABINET TO ACCOMMODATE 36"x16" CUTOUT
 - 32 CABLES TO OVER HEAD PROJECTOR. REFER TO TEL/COM.
 - 33 WIRE MANAGEMENT BY OWNER
 - 34 FRAMED MIRROR. SEE SCHEDULE ON SHEET A5.4 (G)
 - 35 PROVIDE FULL EXTENSION SLIDES
 - 36 2'-6"Wx4"H TACK BOARD
 - 37 MECHANICAL CONTROL. REFER TO MECHANICAL
 - 38 WALL CABINET - PLAS. LAM. TYP.
 - 39 FIRE ALARM. REFER TO ELECTRICAL
 - 40 7'-6"Wx1"H TACK BOARD
 - 41 10"Wx4"H MARKERBOARD WITH CONTINUOUS 2" MAP RAIL
- GENERAL NOTES:**
- 1. 3" UTILITY ACCESS GROMMET AT EACH COMPUTER STATION AND WHERE SHOWN.
 - 2. CONTINUOUS MAP RAIL AT TOP OF ALL LCS BOARDS.
 - 3. FIELD VERIFY ALL DIMENSIONS.
 - 4. CABINETS TO BE SECURELY FASTENED TO WALL.
 - 5. LOCK ALL CABINET DOORS & DRAWERS. EXCEPT SINK CABINETS, SEE SPECIFICATIONS

PINDER-MARTIN ASSOCIATES, INC.
1001 N. 12th AVENUE
PENSACOLA, FL 32501
850-439-9110
AA26000896

PROJECT:
5 CLASSROOM ADDITION

LOCATION:
WEST NAVARRE INTERMEDIATE SCHOOL
1970 COTTON BAY LANE
NAVARRE, FL 32566

CONSULTANTS:
JEHL-HALSTEAD INC.
49 EAST CHASE STREET
PENSACOLA, FL 32502

CRAFT & WEBSTER
STRUCTURAL ENGINEERING, INC.
528 HIGHTON DRIVE
GULF BREEZE, FL 32561

GULF BREEZE CONSULTING, INC.
139 EAST GOVERNMENT STREET
PENSACOLA, FL 32502

ADAMS CONSULTING
ENGINEERING, INC.
3 WEST GARDEN STREET - SUITE 382
PENSACOLA, FL 32502

NEW CLASSROOM ADDITIONS

WEST NAVARRE INTERMEDIATE

No.	Revision/Issue	Date

DAVID J. PINDER
ARCHITECT OF RECORD
AR 0010632

DRAWN BY: djp/dcp
CHECKED BY: mmm
PINDER-MARTIN ASSOCIATES, INC.
PROJECT #: 21118.03
REVIEW: 09-06-11
PERMITTING: 09-08-11
RELEASE FOR BIDDING: 09-19-11

INTERIOR ELEVATIONS

A5.2
21118.04 A5_2